

Plate 4.03a Temporary Gravel Construction Entrance
Source: Erosion Draw

4-8

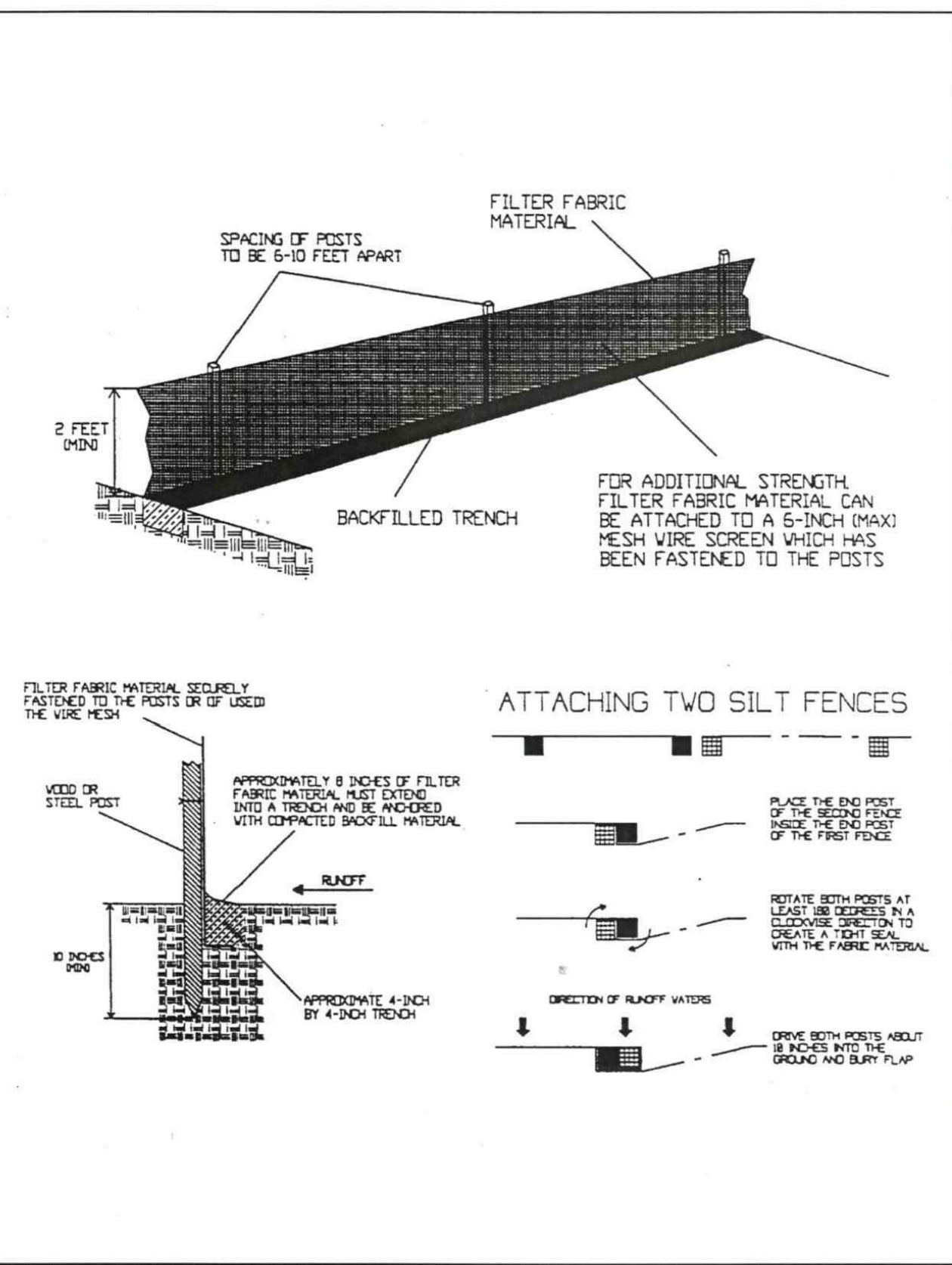
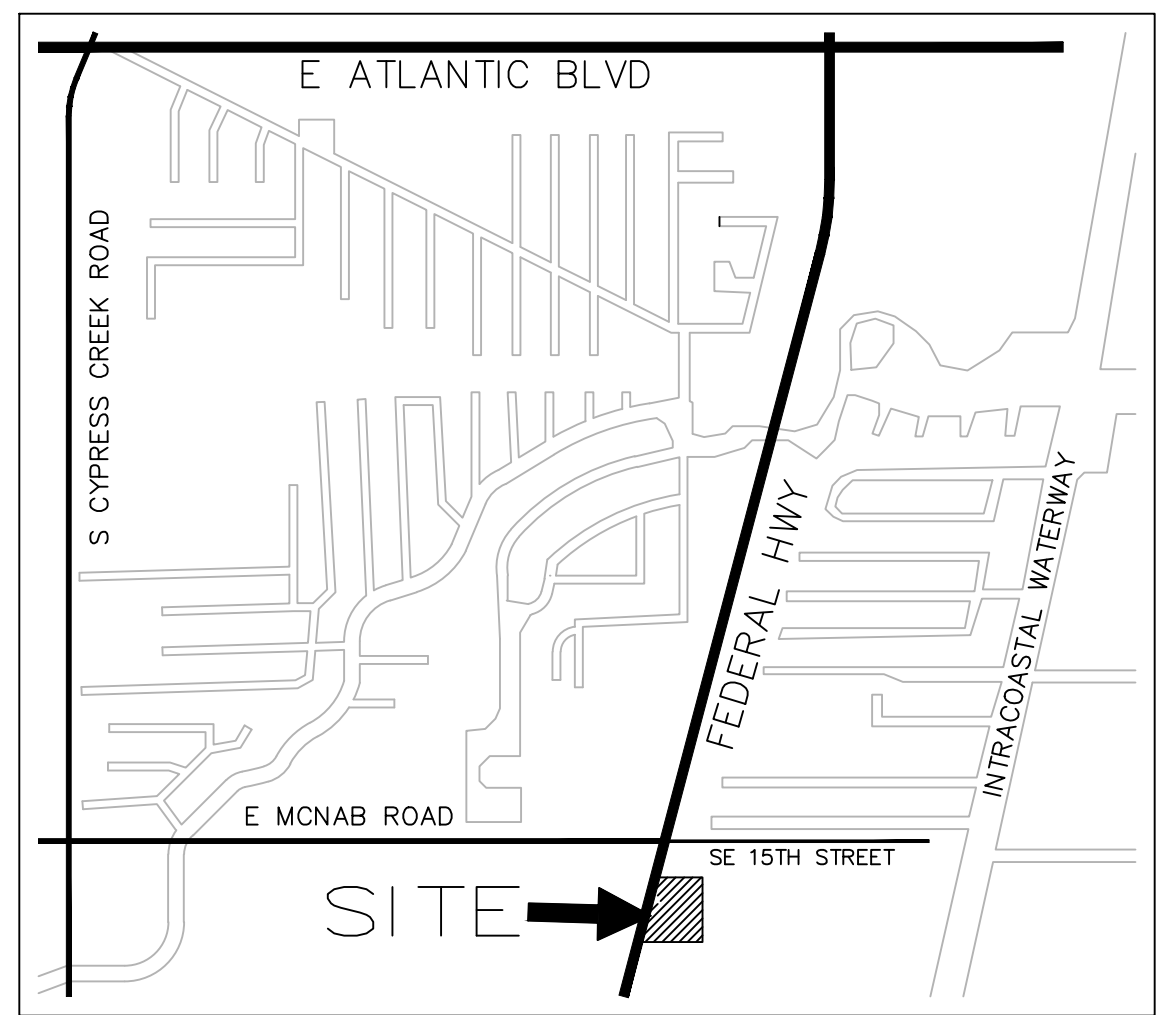
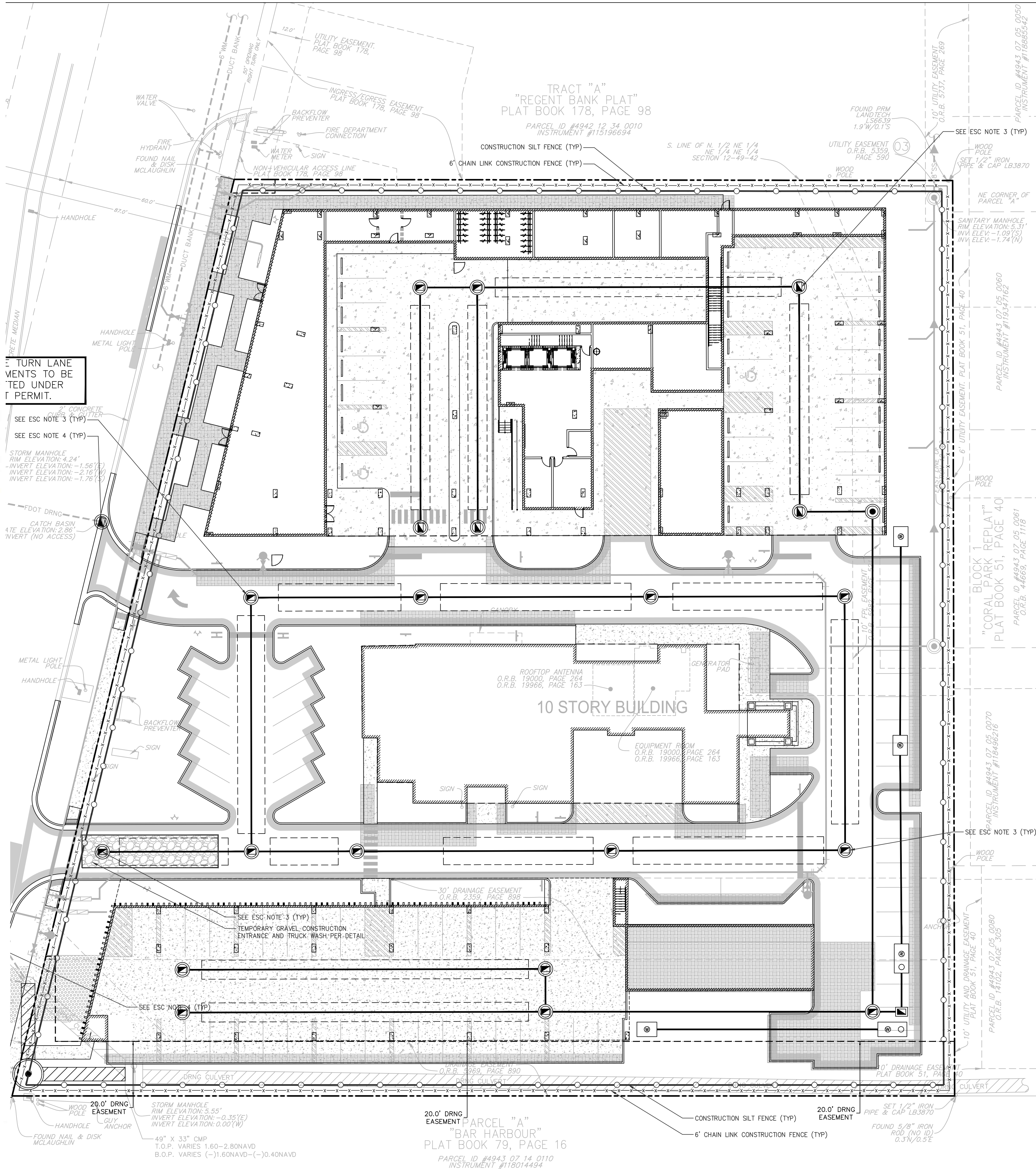


Plate 4.06d Installing a Filter Fabric Silt Fence
Source: HydroDynamics, Inc.

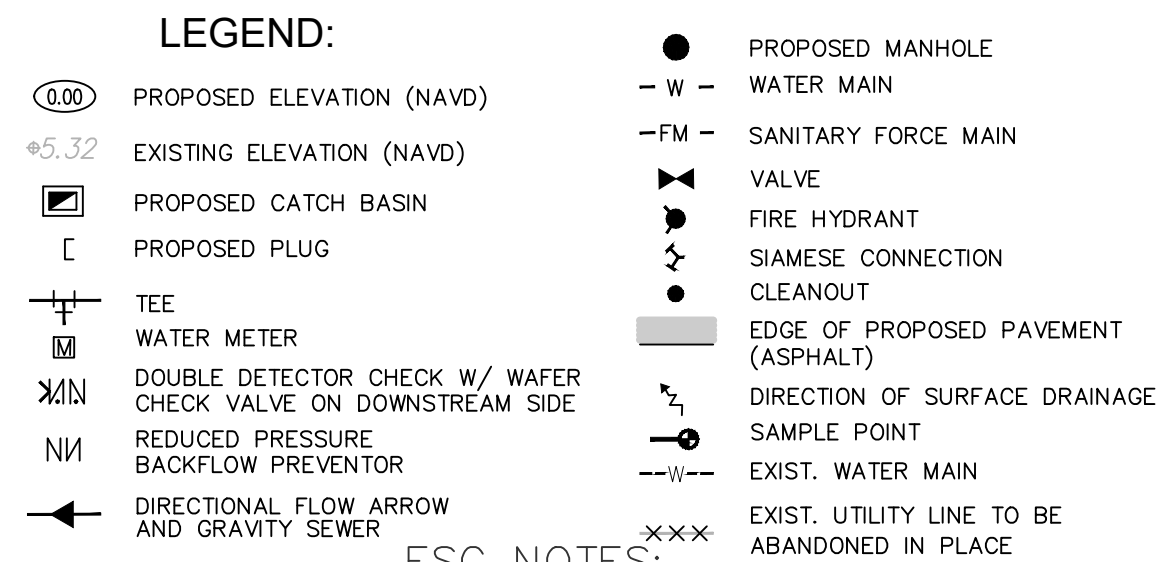
PZ24-12000027
06/24/2026

4-28



LOCATION MAP

NTS



This document has been digitally signed and sealed by
Blake M. Kidwell on 04/23/2026.

Printed copies of this document are not considered signed and sealed.

NPDES

ALL PROJECTS THAT WILL RESULT IN THE DISTURBANCE OF 1 OR MORE ACRES OF LAND CONTRACTORS ARE REQUIRED TO SUBMIT A STORM WATER NOTICE OF INTENT (DEP FORM 62-621.300(4)(b)) 48 HOURS PRIOR TO THE COMMENCEMENT OF CONSTRUCTION TO THE FLORIDA DEPARTMENT OF ENVIRONMENTAL PROTECTION, NPDES STORMWATER PROGRAM, 2600 BLAIR STONE ROAD MAIL STATION 2510, TALLAHASSEE, FL 32399-2400. ADDITIONAL DETAILS ARE AVAILABLE AT WWW.DEP.STATE.FL.US/WATER/STORMWATER/NPDES

VERTICAL DATUM CONVERSION

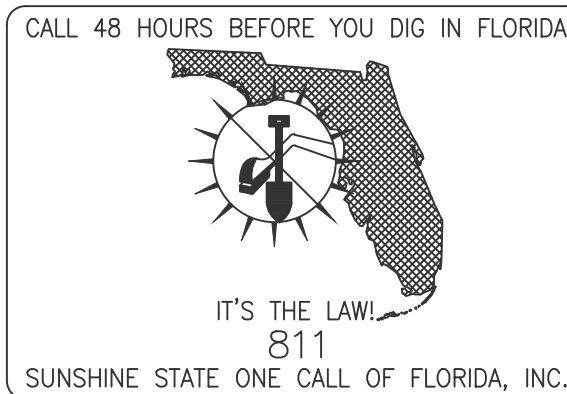
GRADING SHOWN UTILIZES N.A.V.D. 88

N.G.V.D. 29

N.A.V.D. 88

N.A.V.D. 88 = N.G.V.D. 29 - 1.51'

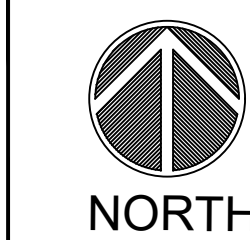
N.G.V.D. 29 = N.A.V.D. 88 + 1.51'



Sheet Title

1600 S FEDERAL HIGHWAY
(MIXED-USE PROJECT)
1600 S FEDERAL HIGHWAY
POMPAU BEACH, FLORIDA 33062

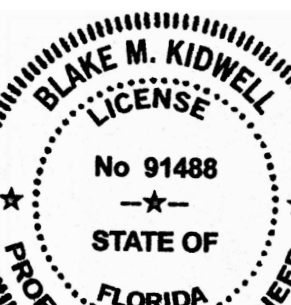
Job Title



Revisions

Rev	Date	By	Appr
1	06/02/26	AAC	
2			
3			
4			
5			
6			
7			
8			
9			
10			

Phase:
PERMIT
DOCUMENTS



Scale:	Date
1"=20'	12/18/24
Job No.	Plot Date
24-1832.00	04/22/26
Drawn by	Sheet No.
BMK	ESC
Proj. Mgr.	
BMK	
Appr. by	
BMK	
	4 of -